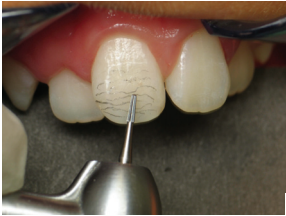


Mastering Anterior Direct Composite Resins to Achieve Accreditation Results

James H. Peyton, DDS, FAACD



AACD New Orleans Meeting
2008



Getting ready for Accreditation...

1. AACD Accreditation Lectures & "Hands-on" Workshops
2. AACD Accreditation Book & Photography Book
3. Attend Esthetic Dentistry Programs
4. Practice on typodonts & stone models

© 2008 by Jim Peyton, DDS

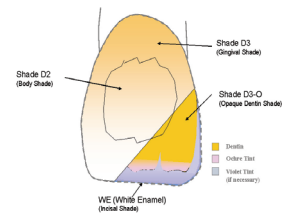
Find a clinical case appropriate for accreditation...

- Good soft tissue health
- Correct position of teeth and soft tissue
- Carefully evaluate study models & photos
- Do a Diagnostic Wax-up
- Check the Accreditation Criteria
- Is the patient willing to sit through & go through what needs to be done
- Find a "mentor" ...ask their opinion on your case

© 2008 by Jim Peyton, DDS

Pre-Operative Considerations

- Wax-up the ideal contours
- Make a "Putty Matrix"
- Make a color map
- Select all the materials



© 2008 by Jim



Class IV Fracture



- Use a study model to wax-up & create a putty matrix (or do an intraoral mock-up)
- Shade selection and color map
- Prepare tooth with a deep bevel and "infinite" margin
- Create a composite lingual shelf with putty matrix (use a milky white enamel shade)
- Add the dentin composite layer and create dentin lobes

© 2008 by Jim Peyton, DDS

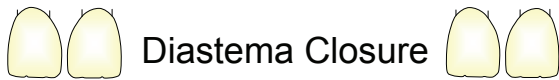


Class IV Fracture



- Add a little clear incisal shade between lobes
- Add the enamel composite shade
- Evaluate the need for tints or opaques
- Add the final incisal translucent layer (or value layer)
- A variety of microhybrids work excellent for this, make sure your composite system has all basic shades you need

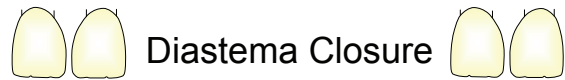
© 2008 by Jim Peyton, DDS



Diastema Closure

- Space should be greater than 1mm
- Teeth should be the same shade, symmetrical, & in good arch form
- Need good gingival health
- Measure distal to distal width and divide by two to obtain desired final tooth width
- Pack cord to obtain good gingival contour
- Add composite (Microfill is best) to the mesial-facial of one central

© 2008 by Jim Peyton, DDS



Diastema Closure

- Make first addition slightly wider
- Add to lingual and contour and polish mesial surface to high polish
- Check width with digital caliper
- Make sure the midline is straight up and down
- Add composite to the facial of other central slightly short of contact area
- Place a plastic strip, add lingual composite, pull thru to facial and contour composite
- Cure with composite directly touching tooth
- Finish and polish restorations

© 2008 by Jim Peyton, DDS



Direct Resin Veneers

- Smile design, wax-up, mock-up, shade selection, material selection, etc.
- Start with a single central incisor
- Build up composite layers: dentin, enamel, incisal trans, tints & opaquers as needed
- Establish primary anatomy, incisal edge position, tooth width, smooth interproximal
- Build-up second central to mimic first

© 2008 by Jim Peyton, DDS



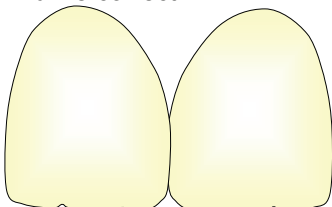
Direct Resin Veneers

- Use putty matrix to establish lingual contour and incisal edge as well as a guide during entire procedure
- Laterals can be built-up at the same time, a little variation in contour is OK
- Cuspids can also be built-up at the same time
- Adjust bite, floss contacts, rubber cup polish, and take initial photos (Primary anatomy)
- Evaluate photos, models, and reappoint for one of several more finishing & polishing appts.

© 2008 by Jim Peyton, DDS

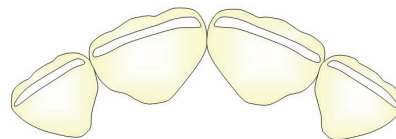
Start with the Centrals

- Should be mirror images of each other
- Check from all views
- Is the midline correct?



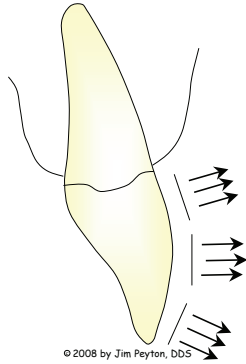
© 2008 by Jim Peyton, DDS

Incisal Edge Position



© 2008 by Jim Peyton, DDS

Facial Contour



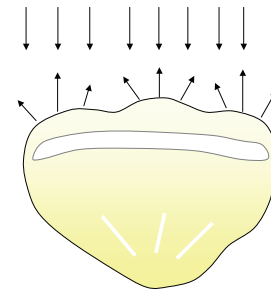
Establish Primary Anatomy



Transitional Line Angles (Secondary Anatomy)



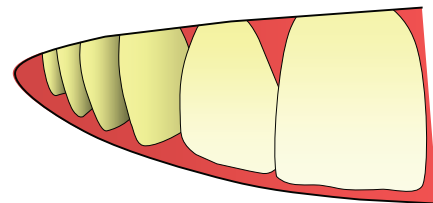
Light Reflection and Surface Contour



Create Tertiary Anatomy



Buccal Corridor & Canine Position



Contouring & Polishing Instruments

- Discs



© 2008 by Jim Peyton, DDS

Contouring & Polishing Instruments

- Rubber Cups, Wheels, & Points



© 2008 by Jim Peyton, DDS

Contouring & Polishing Instruments

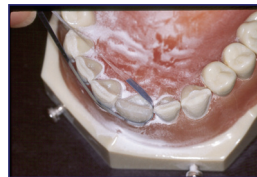
- Diamonds and Carbides



© 2008 by Jim Peyton, DDS

Contouring & Polishing Instruments

- Finishing strips
- #12 Bard Parker Scalpel



© 2008 by Jim Peyton, DDS

Contouring & Polishing Instruments

- High polish with Flexibuff & Enamelize



© 2008 by Jim Peyton, DDS

Major Flaws to Avoid

- Dark Triangle
- Visible Margins
- Show-thru of tooth
- Gingival irritation
- Rough & Irregular Composite Surface
- "Unnatural Looking Restoration".....Does the restoration mimic nature?

© 2008 by Jim Peyton, DDS

AACD 2008 Handout References

Books

- Baratieri, LN, Berry, TG. Esthetics: Direct Adhesive Restoration on Fractured Anterior Teeth. Carol Stream, IL. Quintessence Publishing; 1998.
- Terry, DA. Natural Aesthetics with Composite Resin. Mahwah, NJ: Montage Media Corporation; 2004.
- Rufenacht, C. Lee R. Fundamentals of Esthetics. Quintessence Publishing Co, Inc. Chicago, IL; 1990: 137-145.
- Crispin, BJ. Contemporary Esthetic Dentistry: Practice Fundamentals. Quintessence Publishing, Tokyo; 1994: 241-266.
- Miller, MB. Reality, The Techniques (1-800-544-4999) (www.realityesthetics.com)

Periodicals

Behle, Cary. Placement of Direct Composite Veneers Utilizing a Silicone Build-up Guide and Intra oral Mock-up. Practical Periodontics and Aesthetic Dentistry 2000; 12(3):259-268.

Fahl, NJ. Achieving Ultimate Anterior Esthetics with a new Microhybrid Composite. Compendium Supplement No.26: Vol. 21, 2000:4-13.

Vanini, L. Light and Color in Anterior Composite Restorations. Practical Periodontics and Aesthetic Dentistry 1996;8(7):673-682.

Nash, Ross W. Freehand Composite Veneering - The Direct Option. Practical Periodontics and Aesthetic Dentistry 1994; 6(3):89-94.

Spear, F. The Maxillary Central Incisal Edge: A Key to Aesthetic and Functional Treatment Planing. Compendium Continuing Education Dentistry 1999;20(6): 512-516.

Peyton, James. Finishing and Polishing Techniques: Direct Composite Resin Restorations Practical Periodontics and Aesthetic Dentistry 2004, May pg.293

Videos

The Masters Video Series: "Direct Resin Veneers" by Dr. Buddy Mopper (1-800-540-2922)
National Dental Network DVD Series: Dr. Newton Fahl, Jr., Dr. Corky Willhite, Dr. Ron Jackson www.nationaldentalnetwork.com (1-866-465-4164)

Classes

UCLA Continuum <http://uclasod.dent.ucla.edu/continuingeducation> (1-310-206-0878)
Esthetic Professionals (Tarzana, CA) www.estheticprofessionals.com (1-877-374-3371)
Center for Esthetic Excellence (Chicago, IL) www.cosmedent.com (Cosmedent 1-800-621-6729)

Las Vegas Institute (LVI) www.lvilive.com (1-888-584-3237)

Fahl Institute (Curitiba, Brazil) www.fahl.com.br

Hands-on Courses at the Annual AACD Meetings www.aacd.com

IDEA - Interdisciplinary Dental Education Academy www.ideausa.net (1-650-578-9495)

Tints & Opaquers

Creative Color (Cosmedent)
Kolor Plus (Kerr)

Contouring Instruments

IPC - Long & Short (Cosmedent)
8A - Long & Short (Cosmedent)
Multiuse (Cosmedent)
Hollenback #6 (S.S. White)
Gold Almore Instrument (Almore, 1-800-547-1511)
Artist Brushes (#1, #3)(Cosmedent & Art Stores)

Finishing & Polishing

Strips:

Visionflex (Brasseler, 1-800-841-4522)
Flexi-diamond Strips (Cosmedent)

Discs:

Sof-Lex XT (3M ESPE)
Flexi-Discs (Cosmedent)
Flexi-Buff (Cosmedent) - A must for everyone!!!

Rubber Polishers:

Flexi-Points, Flexi-cups, Flexi-Wheels (Cosmedent)
Enhance, Pogo (Dentsply/Caulk)
Jiffy Polishers (Ultradent)

Brushes:

Jiffy Brush (Ultradent)

Polishing Pastes:

Enamelize (Cosmedent)
Prisma Gloss (Dentsply/Caulk)

Scalpel Blade:

#12 Bard Parker

Burs:

Long Fluted Carbide (ET9) (Brasseler)
Football Carbide (H379) (Brasseler)
Flame Tip Carbide (7901) (Brasseler)
Kits: Mopper (35031) (Brasseler)
ET Carbide Kit (299900) (Brasseler)
Composite Finishing Set by Dr. Fahl (LS-7521)
(Axis Dental Corp. 1-888-654-2947)

Miscellaneous:

Digital Caliper (General Tool & Supply Co. 1-800-322-0005)(order #500-196)