

**“Addition by Subtraction”
Conservative Preparation Workshop
for Porcelain Veneers**

Douglas L. Lambert, D.D.S.

DDSSmile@aol.com

*Excellence in Cosmetic Dentistry 2008
American Academy of Cosmetic Dentistry
24th Annual Scientific Session
May 9, 2008*

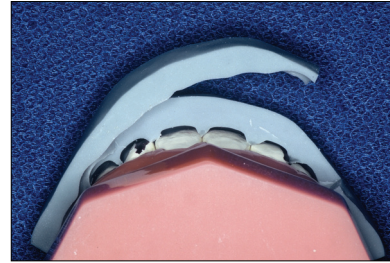
STEP ONE:

Aesthetic Pre-Recontouring (APR)



- Study the model both facially and incisally in order to evaluate which teeth require recontouring to bring them into proper arch form based on the stone model of the wax up

Douglas L. Lambert, DDS, FACP, ABAD



- Cut the silicone index with the Bard Parker longitudinally to expose one half of the teeth
- Try it onto the model and note the areas which prevent the index from seating

Douglas L. Lambert, DDS, FACP, ABAD



- Mark those areas with the black Sharpie pen

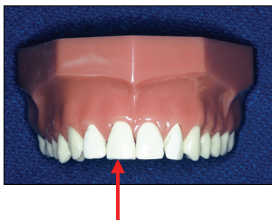
Douglas L. Lambert, DDS, FACP, ABAD



- Recontour them with the Brasseler 5878-012 diamond

Douglas L. Lambert, DDS, FACP, ABAD

- Check your pre-recontouring visually for sufficient reduction



Douglas L. Lambert, DDS, FACP, ABAD

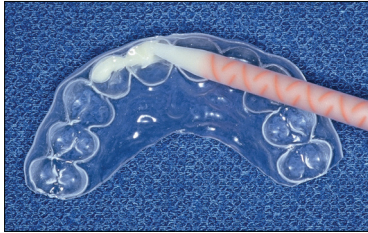
- Verify by trying on the clear plastic stent and the silicone index



Douglas L. Lambert, DDS, FACP, ABAD

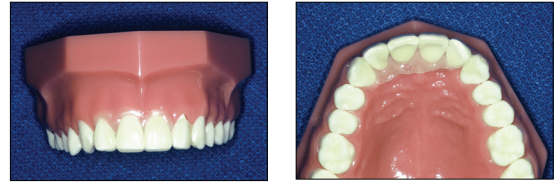
STEP TWO:

Aesthetic Preparation Temporaries (APT)



- Syringe the Integrity bisacrylic temporary material into the clear plastic stent being sure to flow sufficient material onto the facial aspect of the stent

Douglas L. Lambert, DDS, FACD, ABAD



- Seat the stent firmly onto the tooth model and wait at least 3 minutes until set, then remove the stent
- The pre-preparation temporaries now are a replica of the diagnostic wax up and will act as a guide to a conservative veneer preparation

Douglas L. Lambert, DDS, FACD, ABAD

STEP THREE:

Conservative veneer preparation



- Mark the two central incisors on the facial with the black Sharpie pen

Douglas L. Lambert, DDS, FACD, ABAD



- Using the 5878-012, cut depth grooves into the incisals of #8 and #9 to the diameter of the diamond – roughly 1.3mm
- Level off the incisal edges to a uniform length

Douglas L. Lambert, DDS, FACD, ABAD



- Begin your preparation of tooth # 8 with the 0.5 mm depth cutter in the middle and incisal thirds of the tooth
- Use the 0.3mm depth cutter for the gingival-incisal third. Remember to tilt the depth cutter to follow the facial profile of the tooth in each plane

Douglas L. Lambert, DDS, FACD, ABAD



- Take the Sharpie and remark the depth grooves created by the depth cutting bur
- Continue the facial veneer preparation with the 5878-012 or the 878-010 until all the black markings are gone

Douglas L. Lambert, DDS, FACD, ABAD



- Use the 5878-012 to prep #9 by cutting vertical depth grooves of no more than one half the width of the diamond

Douglas L. Lambert, DDS, FACD, ABAD



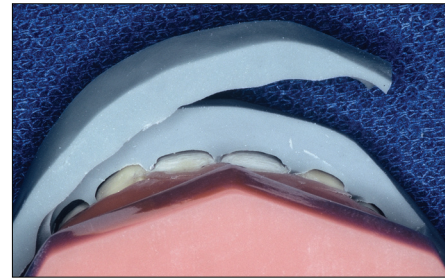
- Connect the grooves on #9 using the 850-014 to even out the facial profile of the preparation and create a chamfer margin supragingivally for the two teeth

Douglas L. Lambert, DDS, FACD, ABAD



- Carry the proximal margin half way through the proximal contact when viewed from the incisal
- Tilt the diamond at a 30-45° angle to create the interproximal "elbow" by following the tissue levels around the papillae

Douglas L. Lambert, DDS, FACD, ABAD



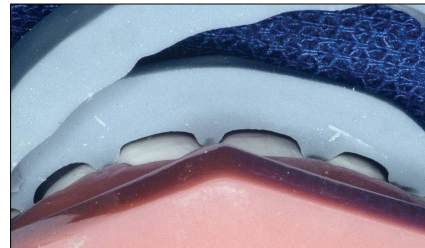
- Verify your preparation reduction so far using the silicone index and the clear stent

Douglas L. Lambert, DDS, FACD, ABAD



- Use the Sharpie to mark teeth #7 and #10
- Prepare using your choice of the depth cutting wheels or the 5878-012 method

Douglas L. Lambert, DDS, FACD, ABAD



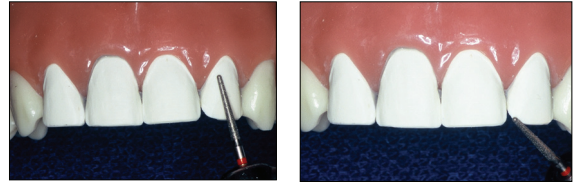
- After prepping the two laterals, verify your facial reduction of 0.5 mm on the four preps with the index and the clear stent

Douglas L. Lambert, DDS, FACD, ABAD



- Pick off any remaining Integrity temporary material

Douglas L. Lambert, DDS, FACD, ABAD



- Refine all four preps using the 8850-014 (red stripe) diamond being sure to level off rough incisal edges and round any sharp corners

Douglas L. Lambert, DDS, FACD, ABAD



- Use the optional 862-010 tapered flame diamond if you like to further finish the contact areas (not in the kits)

Douglas L. Lambert, DDS, FACD, ABAD



- Verify final contours and both incisal (1.5mm) and labial (0.5mm) reduction using the clear stent

Douglas L. Lambert, DDS, FACD, ABAD



- Labial and incisal profiles

Douglas L. Lambert, DDS, FACD, ABAD



- “Extract” your teeth from the model and critique your own preps prior to impressing
- Note the distinct chamfer margin which is essential

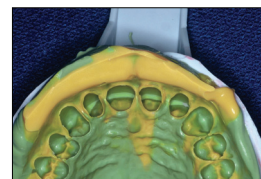
Douglas L. Lambert, DDS, FACD, ABAD

STEP FOUR:
Retraction and Impressioning



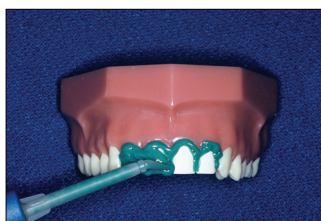
- In the mouth, tissue retraction and hemostasis are accomplished using Expasyl from Kerr (not in kits)
- Syringe the Expasyl into the sulcus, then rinse it out with strong air/water spray after four minutes

Douglas L. Lambert, DDS, FACD, ABAD



- Impression your model using Aquasil Ultra Heavy Body VPS and XLV Wash from Dentsply Caulk

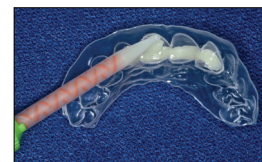
Douglas L. Lambert, DDS, FACD, ABAD



- Try the new Digit single dose delivery system and mini tip for the wash portion of the impression

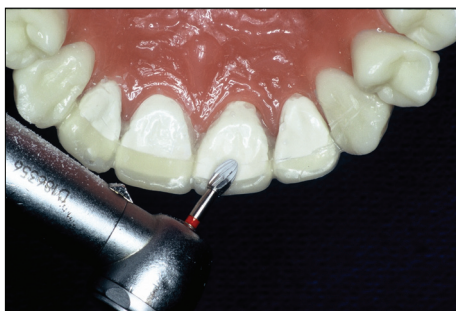
Douglas L. Lambert, DDS, FACD, ABAD

STEP FIVE:
Creating Superior Temporaries



- Syringe the Integrity bisacrylic temporary material into the clear plastic stent being sure to flow sufficient material onto the facial aspect of the stent and insert over model

Douglas L. Lambert, DDS, FACD, ABAD



- After at least three minutes, remove the stent
- Trim excess flash from lingual with the carbide football bur (7408-023)

Douglas L. Lambert, DDS, FACD, ABAD



- Begin removing excess gingival flash with the 12-fluted spiral-bladed flame carbide bur (H48L-012)
- If the temporaries are "locked" into place interproximally, finish gingival margins and refine shapes and occlusion intraorally

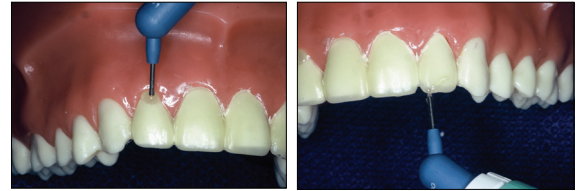
Douglas L. Lambert, DDS, FACD, ABAD

Esthet.X Flow
liquid micro hybrid

Integrity
TempGrip™
Temporary Crown & Bridge Cement
Zinc Oxide Non-Eugenol

- If the temporaries are “removable”, finish margins outside of the mouth, then either “spot etch” and bond with Esthet.X Flow and cure with the iQ2 LED light source
- Or cement using a non-eugenol temporary cement like TempGrip

Douglas L. Lambert, DDS, FACP, ABAD



- Any small voids or additions to the temporaries can be easily added using Esthet.X Flow, then cured with the IQ2

Douglas L. Lambert, DDS, FACP, ABAD



- Polish temporaries to a high lustre using PoGo and Enhance polishing systems

Douglas L. Lambert, DDS, FACP, ABAD



- Finished Integrity temporaries

Douglas L. Lambert, DDS, FACP, ABAD